



MICHAYE BOULTER
Crossing

MICHAYE BOULTER
Crossing

6 - 21 February 2015
Opening Reception
Friday 6 February, 6pm

Michaye Boulter's practice charts the paradoxical vastness and intimacy of the sea, channelling unfiltered memories that collectively reveal a psychological symbiosis with the natural world. Having spent much of her early years afloat with her fisherman father, and after settling on Bruny Island with her husband, a seafarer, Boulter draws from a fertile wellspring of inspiration, experience and knowledge. The artist's virtuosic seascapes are gradually built up over time with thin glazes, creating a sense of depth and luminosity reflective of the layers of mystery that shroud the depths of the ocean.

'Crossing' is an exhibition that speaks of long voyages, the lure of the ubiquitous horizon and the mesmerising emptiness in-between. With vivid romantic sentiment, the exhibition presents us with the transformative and transcendent nature of the endless ocean, a place of limitless possibilities where time exists without expectation.



Looking Back, oil on linen, 122 x 152 cm, \$9,500 - SOLD



Calling, oil on linen, 82 x 122 cm, \$7,500



Awoke, oil on hand beaten steel, approx. 32.5 x 36.5 cm, \$1,700 - SOLD



Looking for Land, oil on linen, 112 x 168 cm, \$9,500 - SOLD



Passing, oil on linen, 82 x 122 cm, \$7,500 - SOLD



Crossing, oil on linen, 122 x 198 cm, \$12,000 - SOLD



Echo (In the Night) I, oil on board, 15 x 30 cm, \$1,500 - SOLD



Envisage, oil on linen, 82 x 122 cm, \$7,500 - SOLD



Mind's Eye, oil on hand beaten steel, approx. 25 x 36 cm, \$1,700 - SOLD



Lagoon Trees, oil on board, 50.5 x 40.5 cm, \$2,800



In Time Between, oil on linen, 112 x 168 cm, \$9,500



Lasting, oil on linen, 82 x 122 cm, \$7,500



Moments, oil on hand beaten steel (triptych), approx. 47 x 49 cm, \$2,800



There and Not There I, oil on board, 15 x 30 cm, \$1,500 - SOLD



Return, oil on linen, 82 x 122 cm, \$7,500 - SOLD



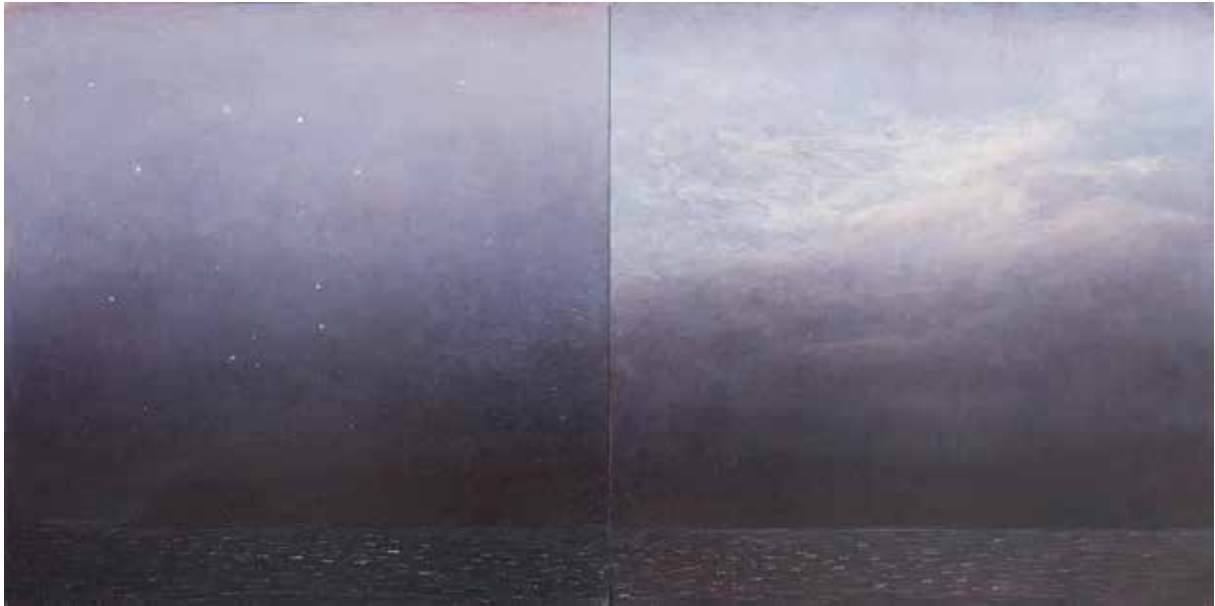
Longing III, oil on board, 20.5 x 25.5 cm, \$1,500 - SOLD



Landfall, oil on linen, 82 x 122 cm, \$7,500



In Rain, oil on linen, 122 x 198 cm, \$12,000



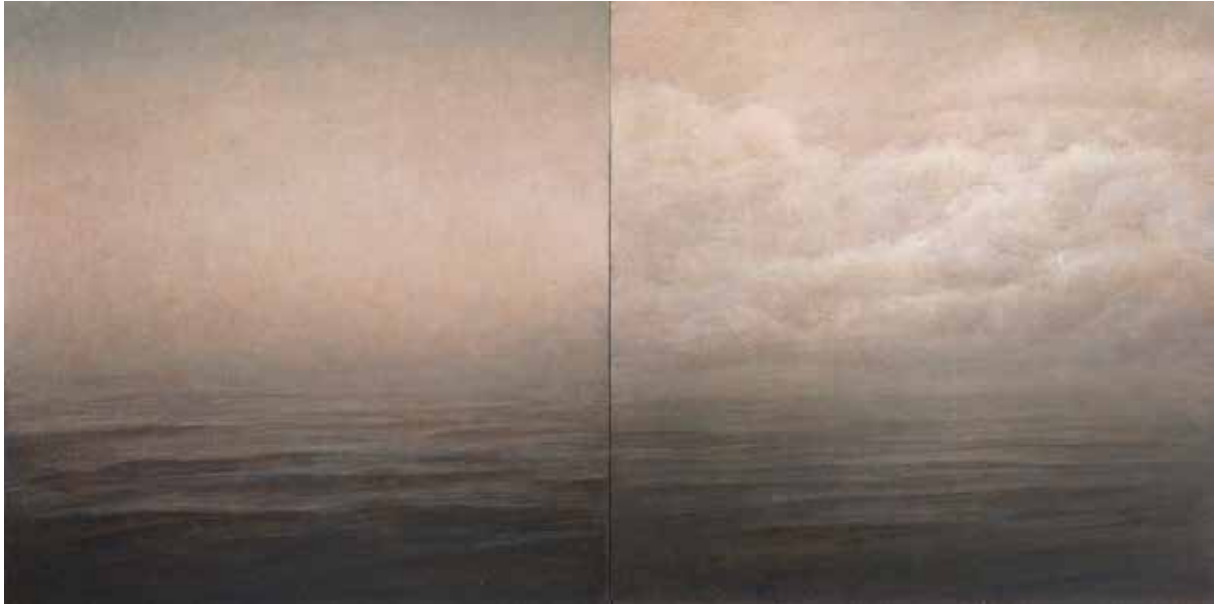
Echo (In the Night) II, oil on board, 15 x 30 cm, \$1,500 - SOLD



Wait, oil on hand beaten steel, approx. 25 x 17 cm, \$1,500



Lighthouse Walk, oil on linen, 56 x 56 cm, \$ 3,500



There and Not There II, oil on board, 15 x 30 cm, \$1,500



Lure, oil on linen, 61 x 61 cm, \$3,500



Cloudy Bay Lagoon, oil on linen (triptych), 61 x 183 cm overall; 61 x 61 cm each, \$7,900 - SOLD