



KATE DORROUGH
The Vessel and the River



KATE DORROUGH

The Vessel and the River

27 July – 12 August 2023

Opening Celebration, Thursday 27 July, 6 – 8 pm

Dorrrough's body of work is an invitation to float suspended within the landscape – like silt in a river. A sensation that draws its embodied inspiration from the artist's memories of swimming in creeks on family holidays during her formative years. Floating in a natural body of water alters our relationship to our surroundings, as we look upwards, trees appear taller and more ethereal, skies seem preternaturally blue against shimmering, pink, sandstone forms. Whilst one is floating, one's body becomes alert to tiny shifts in the atmosphere, one feels connected to something deeper, older, and more mysterious. The experience of floating is intuition made real, reminding us we are not separate from that which surrounds us. Each of Dorrough's artworks becomes a testament to our intimate connection with the earth, reminding us of the eternal rhythmic pulse of creation, destruction, and renewal, and the exquisite beauty and vulnerability inherent in every stage.

Infusing her work with a personal lexicon of symbolic motifs, that at times resemble trees, serpents, and humans, and at other times read as abstract notations alluding to hidden meanings. Dorrough's leitmotifs are informed by musical scores and by her own drawings completed in the landscape and refined in the studio. Occasionally, in exquisitely intimate moments of motherly affection, laced with anxiety and hope, her marks are inspired by the vulnerable, handwritten script of her children. Dorrough carries this lexicon of marks across her paintings and on to her clay vessels, across whose surface, the calligraphic traces of the artist's hand continues to occur like a rhythmic pulse. Her pots are contemporary iterations of classical, utilitarian vessels, inspired by her time working on an archaeological dig in Greece where Dorrough fell in love with the ancient, monumental forms of Etruscan pottery.

The tangible nature of paint and clay play a crucial role in Dorrough's exploration of creation and destruction. Her textured passages created with a palette knife, and the interplay between transparent and opaque washes of paint create a sense of space and time in her works, resembling the geological processes that shape our surroundings. Her painterly process emulates the gradual accumulation and erasure of earth over time, like the way a riverbed carves its path – a path continuously shaped by the impacts of meteorological events such as storms, droughts, and floods. This body of work is both beautiful and portentous, reflecting the complexities of our relationship with the earth and the legacies we leave behind.

Kate Dorrough's artworks evoke an expansive, arcane, geological, connection to the land we inhabit, a land operating as an archaeological vessel holding past events within its body of mud and water. A land haunted by vast and indelible memories of what went before. Whilst Dorrough's marks are conduits for the artist's personal memories, they carry traces of the collective unconscious, Jung's concept that memories surpass the limitation of the individual and are common to humanity and carried in the inherited structure of the brain. Dorrough invites us to contemplate the ephemeral nature of existence and the interplay between memory, perception, and ever-changing landscapes that not only shape all our lives, but on which all our lives depend.

Naomi Lee McCarthy

Dorrough's work as a painter and ceramicist has led to an extensive career exhibiting work at leading galleries in Sydney, Melbourne, Brisbane and Canberra, as well as a number of residencies including La Macina di San Cresci, Italy (2018), Art Vault (2011), the Hill End Artists Residency (2005), Bundanon Trust (1999) and the Cite Internationale des Arts in Paris (1999). She has been a finalist in a number of awards including the Calleen Art Award (2020, 2019, 2018), North Sydney Art Prize (2022, 2019), Muswellbrook Art Prize (2019, 2015), Paddington Art Prize (2021, 2018, 2012, 2011, 2007), Mosman Art Prize (2019, 2012, 2004, 2001, 2000, 1995), Portia Geach Memorial Award (2004, 2001, 1992), Woollahra Small Sculpture Prize (2010, 2008), Sawmillers Sculpture Prize (2022, 2010), Clunes Ceramic Art Award (2022, 2010), and was selected for the Australian Ceramics Association Biennial Exhibition (2014). Dorrough's work is also held in various public and private collections around Australia, including Campbelltown Art Gallery, Sony Music Entertainment, Grafton Regional Gallery, Bathurst Regional Gallery and Melbourne Casino.



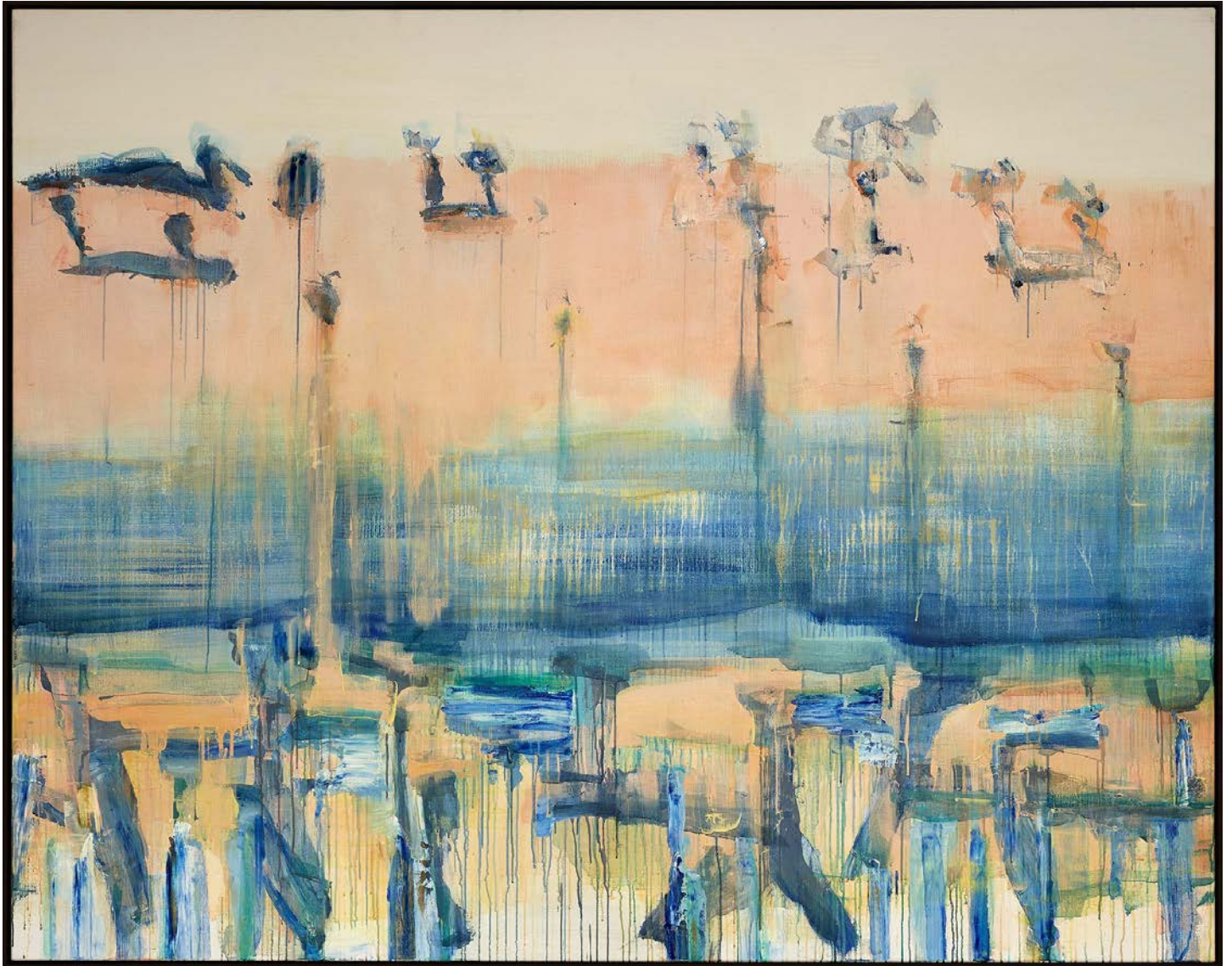
Photograph by Jenni Carter

Aquifers and River Language

acrylic on linen

170.5 x 216.5 cm (framed)

\$14,000



Embedded Calligraphic Marks and Remembering

acrylic on linen

170.5 x 216.5 cm (framed)

\$14,000



Awakening Knowledge

acrylic on linen

170.5 x 216.5 cm (framed)

\$14,000



Big River Ballet

acrylic on linen

170.5 x 216.5 cm (framed)

\$14,000





Photograph by Jenni Carter

River Vessel

stoneware ceramic with glaze and mixed media

45 x 39 x 32 cm

\$3,800



Embodied Knowledge (front and side)

stoneware ceramic with glaze

43 x 31 x 23 cm

\$3,200



Calligraphic Marks of an Ancient River

stoneware ceramic with glaze

38 x 43 x 29 cm

\$3,600





Immersion and Floodlands

acrylic on linen

170.5 x 200.5 cm (framed)

\$13,500



Blue Acquiescence

acrylic on linen

170.5 x 200.5 cm (framed)

\$13,500





Water Vessel (front and back)
stoneware ceramic with glaze
37 x 37 x 33 cm
\$3,600



Journey and Connections

stoneware ceramic with glaze and mixed media

47 x 28 x 25 cm

\$3,200



Musical Notes and Remembering

stoneware ceramic with glaze and mixed media

34 x 37 x 33 cm

\$3,200



Ancient Song of the River's Edge

acrylic on linen

155.5 x 170.5 cm (framed)

\$10,000



Sonnet

acrylic on linen

155.5 x 170.5 cm (framed)

\$10,000



Cyclical Journey

acrylic on linen

139.5 x 155.5 cm (framed)

\$9,000



Calligraphic River Poem

acrylic on linen

140 x 155.5 cm (framed)

\$9,000



Dark River Landscape

stoneware ceramic with glaze and mixed media

34 x 32 x 22 cm

\$2,900



Fusion, River Icon

stoneware ceramic with glaze and mixed media

37 x 33 x 31 cm

\$3,200



River Hymn

stoneware ceramic with glaze

30 x 38 x 24 cm

\$2,900



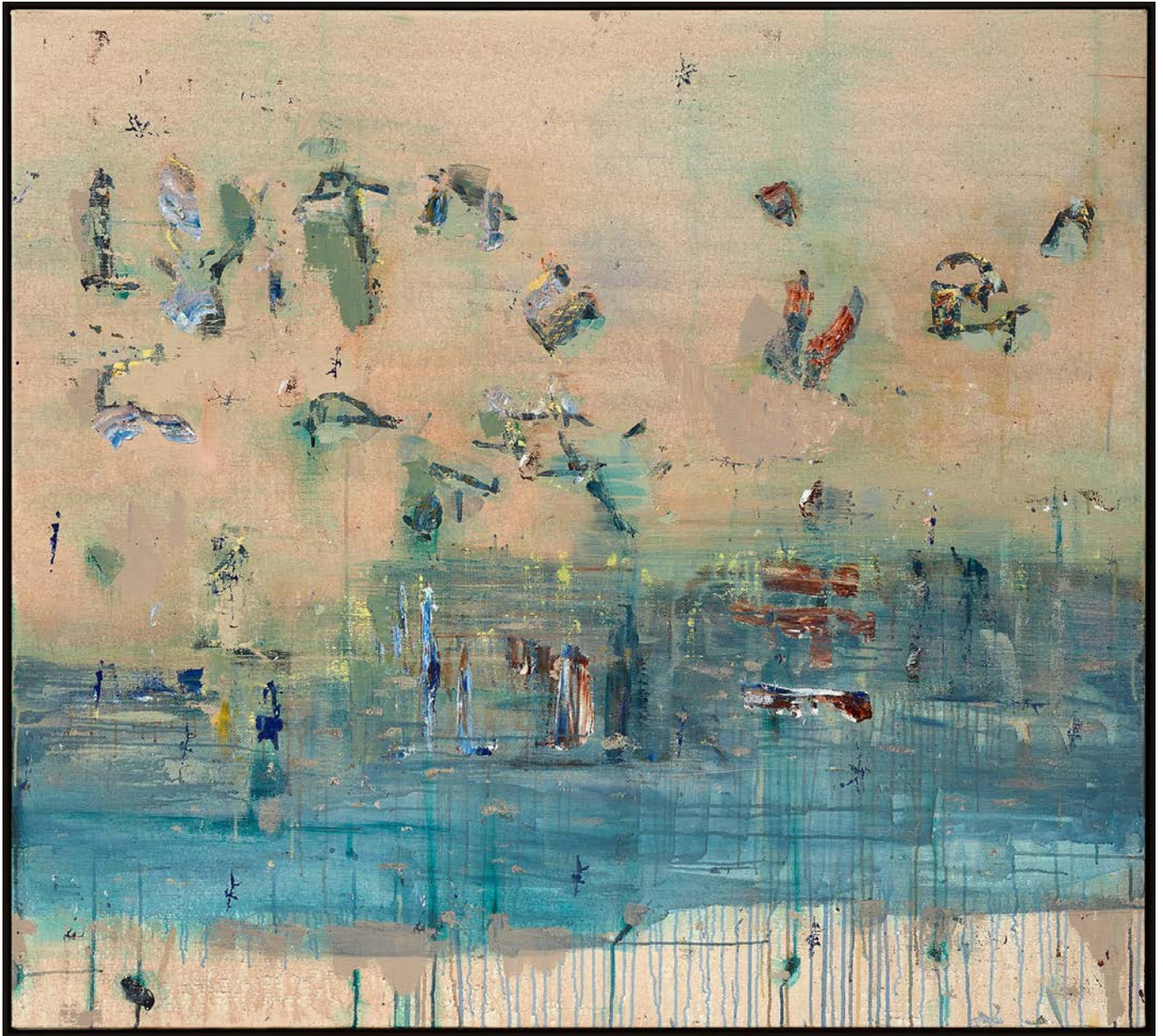


Captured Gesture

acrylic on linen

124.5 x 139.5 cm (framed)

\$7,500



Musical Echoes

acrylic on linen

124.5 x 139.5 cm (framed)

\$7,500



I Carry the Landscape With Me

acrylic on linen

89.5 x 99.5 cm (framed)

\$5,000



Preservation of an Ancient Land

acrylic on linen

89.5 x 99.5 cm (framed)

\$5,000



Citrine and Amber Reflections
acrylic on linen
52.5 x 62.5 cm (framed)
\$3,200



Opalescent
acrylic on linen
52.5 x 62.5 cm (framed)
\$3,200



Topas River Study
acrylic on linen
52.5 x 62.5 cm (framed)
\$3,200



Aquamarine Depths
acrylic on linen
59.5 x 72.5 cm (framed)
\$3,500



Monumental – Water Rites

acrylic on linen

170.5 x 216.5 cm (framed)

\$14,000



River Poem

stoneware ceramic with glaze

42 x 27 x 21 cm

\$2,900



Embedded Recollections of a River

stoneware ceramic with glaze

34 x 36 x 28 cm

\$3,200



Haiku, of a River

stoneware ceramic with glaze

26 x 17 x 13 cm

\$1,800

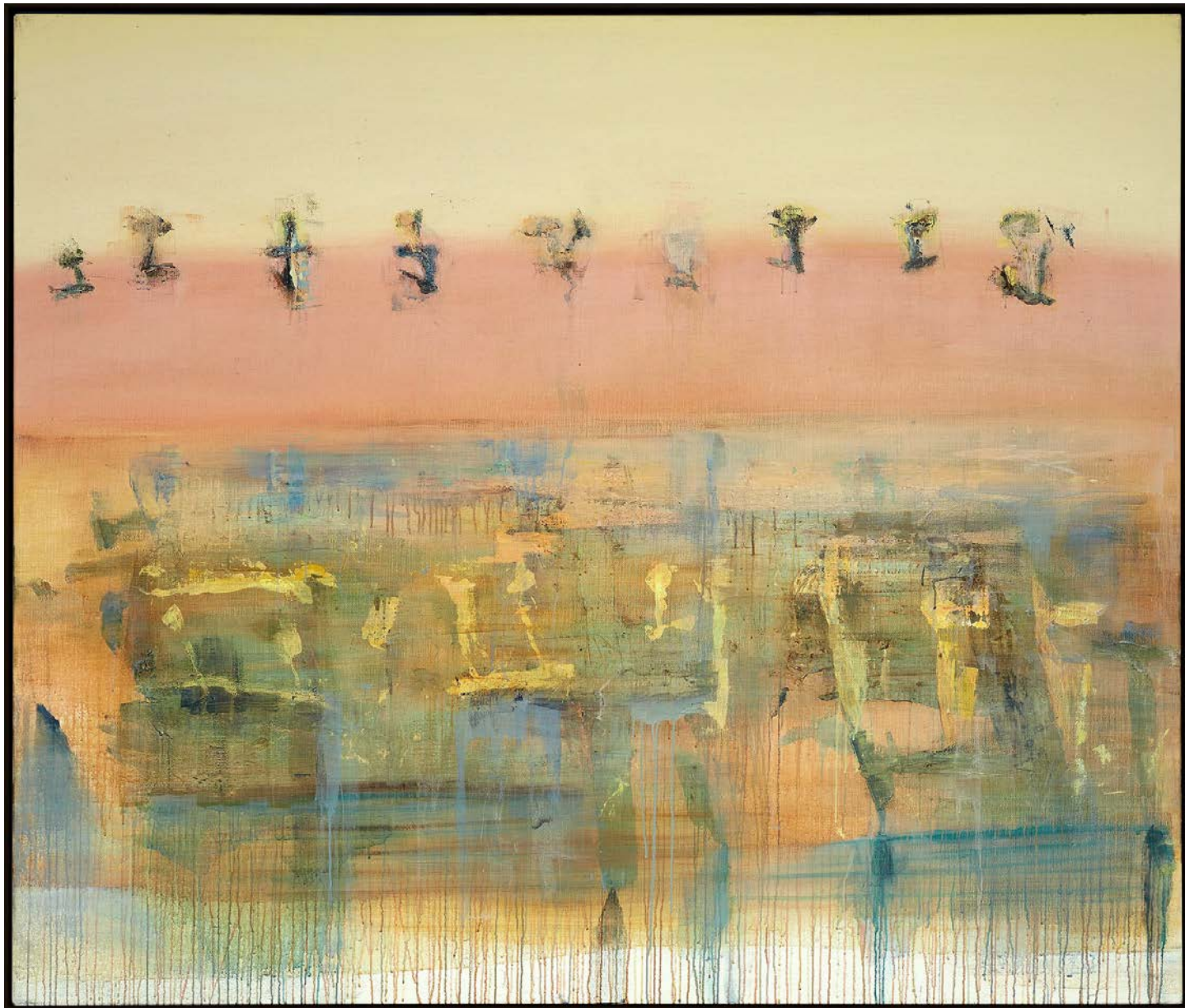


Icons and River Script

acrylic on linen

170.5 x 200.5 cm (framed)

\$13,500

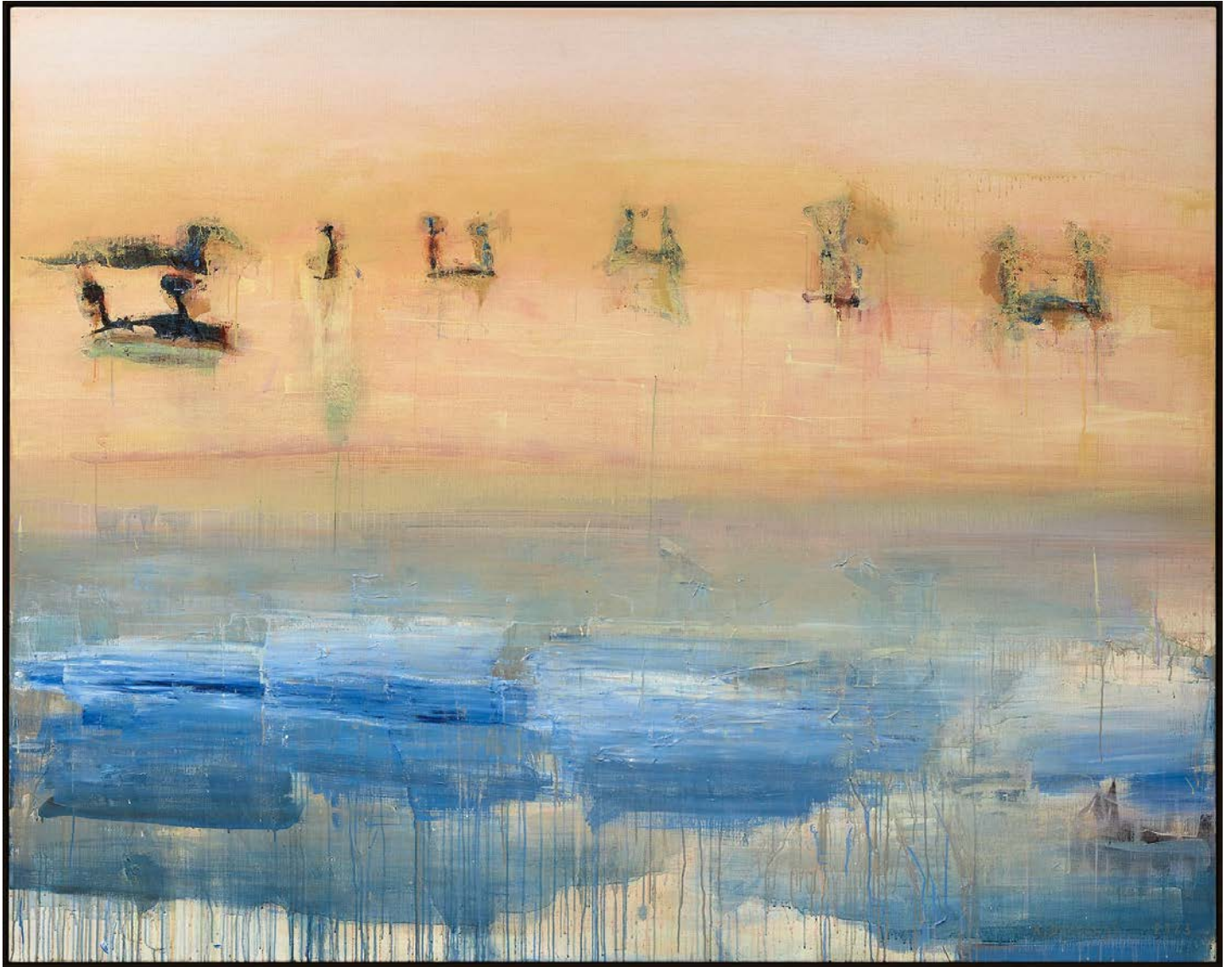


Running River Verse

acrylic on linen

170.5 x 216.5 cm (framed)

\$14,000



Heraldic River Vessel

stoneware ceramic with glaze and mixed media

55 x 36 x 29 cm

\$3,800



River Song and its Echo
stoneware ceramic with glaze
49 x 44 x 30 cm
\$3,800



River Sprites

stoneware ceramic with glaze

29 x 38 x 9 cm

\$2,200





KATE DORROUGH

Born 1964, Sydney, Australia

EDUCATION

- 1994 Master of Art, University of New South Wales, Sydney, NSW
- 1987 Bachelor of Visual Arts (Distinction), Canberra School of Art, ACT

AWARDS, GRANTS & RESIDENCIES

- 2023 Northern Beaches Environmental Art & Design Prize, Manly Art Gallery & Museum Sydney, NSW, Finalist
- 2022 North Sydney Art Prize, The Coal Loader, Sydney, NSW, Finalist
Northern Beaches Environmental Art & Design Prize, Manly Art Gallery & Museum, Sydney, NSW, Finalist
North Queensland Ceramic Awards, Perc Tucker Regional Gallery, QLD, Finalist
Clunes Ceramic Art Award, Castlemaine Art Museum, VIC, Award for Excellence
Meroogal Women's Art Prize, Living Museums, NSW, Finalist
Fishers Ghost Art Award, Campbelltown Arts Centre, NSW, Finalist
- 2021 Paddington Art Prize, Sydney, NSW, Honourable Mention
Fishers Ghost Art Award, Campbelltown Arts Centre, NSW, Finalist
Northern Beaches Environmental Art & Design Prize, Manly Art Gallery & Museum, Sydney, NSW, Finalist
The Still Life Award, Coffs Harbour Regional Art Gallery, NSW, Finalist
- 2020 Ravenswood Australian Women's Art Prize, Ravenswood School for Girls, NSW, Finalist
Calleen Art Award, Cowra Regional Art Gallery, NSW, Finalist
Meroogal Women's Art Prize, Living Museums, NSW, Finalist
- 2019 The Still Life Award, Coffs Harbour Regional Art Gallery, NSW, Finalist
Mosman Art Prize, Mosman Art Gallery, Sydney, NSW, Finalist
The North Sydney Art Prize, Sydney, NSW, Finalist
Georges River Art Prize, Hurstville Museum & Gallery, NSW, Finalist
Calleen Art Award, Cowra Regional Art Gallery, NSW, Finalist
Muswellbrook Art Prize, Works on paper, Muswellbrook Regional Gallery, NSW, Finalist
Sculpture in the Vineyards, Small Sculpture Section, NSW, Finalist
Hawkesbury Art Prize, Purple Noon Gallery, NSW, Finalist
- 2018 GreenWay Art Prize, Art Est, Cooks River Small Sculpture Prize, Winner
Hidden, Rookwood Sculptures, NSW, Finalist

KATE DORROUGH

- 2018 Artist Residency, La Macina di San Cresci, Italy
Paddington Art Prize, Sydney, NSW, Finalist
Calleen Art Award, Cowra Regional Art Gallery, NSW, Finalist
- 2017 Chippendale World Art Residency Prize, NSW, Finalist
- 2015 Parliament Plein Air Painting Prize, NSW, Finalist
The Gallipoli Art Prize, Gallipoli Memorial Club, NSW, Finalist
Muswellbrook Art Prize, Muswellbrook Regional Arts Centre, NSW, Finalist
- 2014 29th Gold Coast International Ceramic Art Award, Gold Coast City Gallery, QLD, Finalist
- 2012 Paddington Art Prize, Sydney, NSW, Finalist
Mosman Art Prize, Mosman Art Gallery, Sydney, NSW, Finalist
- 2011 Art Vault Residency, Mildura, VIC
Paddington Art Prize, Sydney, NSW, Finalist
Hawkesbury Art Prize, Purple Noon Gallery, NSW, Finalist
Manning Art Prize, Manning Regional Art Gallery, Taree, NSW, Finalist
- 2010 Woollahra Small Sculpture Prize, Woollahra Council, Sydney, NSW, Finalist
Sawmillers Sculpture Prize, Sawmillers Reserve, Sydney, NSW, Finalist
Clunes Ceramic Award, Clunes, VIC, Finalist
- 2009 Parliament Plein Air Painting Prize, NSW, Finalist
- 2008 Salon des Refusés, S.H. Ervin Gallery, Sydney, NSW
Woollahra Small Sculpture Prize, Woollahra Council, Sydney, NSW, Finalist
- 2007 Paddington Art Prize, Sydney, NSW, Finalist
- 2005 Hill End Artists Residency, Bathurst Regional Gallery, Hill End, NSW
Redlands Art Prize, Mosman Regional Art Gallery, Sydney, NSW, Finalist
- 2004 Mosman Art Prize, Mosman Art Gallery, Sydney, NSW, Finalist
Portia Geach Memorial Art Award, S.H Ervin Gallery, Sydney, NSW, Finalist
Salon des Refusés, S.H. Ervin Gallery, Sydney, NSW
- 2003 Salon des Refusés, S.H. Ervin Gallery, Sydney, NSW
Ceramic Residency, Fusions Gallery, Brisbane, QLD
- 2001 Conrad Jupiters Art Prize, Gold Coast City Art Gallery, QLD, Finalist
Mosman Art Prize, Mosman Art Gallery, Sydney, NSW, Finalist
Portia Geach Memorial Art Award, S.H Ervin Gallery, Sydney, NSW, Finalist

KATE DORROUGH

SELECTED SOLO EXHIBITIONS

- 2023 'The Vessel and the River', Arthouse Gallery, Sydney
'Heather + Kate Dorrough : Lineage', Manly Art Gallery & Museum, Sydney
- 2021 'Theatre of the Grotto', The Cube, Mosman Art Gallery, Sydney
- 2020 'River Language', Arthouse Gallery, NSW
- 2019 'The Lyrical River', Manning Regional Gallery, NSW
- 2018 'Pieve di San Cresci of Domesticity', The Archaeological Museum of Domesticity and the Everyday,
La Macina di San Cresci, Italy
- 2012 'The Enduring Landscape and the Inland River', Arthouse Gallery, NSW
- 2011 'The Enduring Landscape', Catherine Asquith Gallery, Melbourne, VIC
'Landscape paintings, near and far', Art Vault Gallery, Mildura, VIC
- 2010 'Pants Off', Arthouse Gallery, Sydney, NSW
- 2009 'In Stillness', Edwina Corlette Gallery, Brisbane, QLD
- 2008 'Ode to Light and Slow Time', Arthouse Gallery, Sydney, NSW
- 2006 'The Cup', Melbourne Art Rooms, Melbourne
- 2005 'The Garden', Beaver Galleries, Canberra, ACT
'Hearts Are Trumps', Arthouse Gallery, Sydney, NSW
- 2004 'Fetes Galantes', Arthouse Gallery, Sydney, NSW
'Kate Dorrough Ceramics', Orson and Blake, Sydney, NSW
- 2002 'Whims and Fripperies', Arthouse Gallery, Sydney, NSW
- 2000 'Café', Arthouse Gallery, Sydney, NSW
- 1999 'Suburban Scene', Access Contemporary Art Gallery, Sydney, NSW
- 1997 'Side Show', Access Contemporary Art Gallery, Sydney, NSW
- 1996 'Bronte Bathers', Access Contemporary Art Gallery, Sydney, NSW

SELECTED GROUP EXHIBITIONS

- 2023 'Paper & Clay', Arthouse Gallery, Sydney, NSW
- 2022 'Out of the Blue', Arthouse Gallery, Sydney, NSW
- 2021 'Summer Salon', Arthouse Gallery, Sydney, NSW
- 2020 'Summer', Arthouse Gallery, Sydney, NSW
- 2019 'Reflections of a Fading Sky', Arthouse Gallery, Sydney, NSW

KATE DORROUGH

- 2018 'The Way You Came', Arthouse Gallery, Sydney, NSW
'Sculpture in the Vineyards', Wollombi, NSW
- 2017 'On Paper', Arthouse Gallery, Sydney, NSW
- 2017 'Land', Manly Art Gallery & Museum, Sydney, NSW
- 2016 'Drawing Conversations: Exhibition', National Art School, Sydney, NSW
'Redfern Biennale curated by Damien Minton', Art Month, Sydney, NSW
- 2015 '30 Years/30 Artists/30 Works', Brenda May Gallery, Sydney, NSW
'Redfern Biennale curated by Damien Minton', Art Month, Sydney, NSW
- 2014 'The Course of Objects: the fine lines of inquiry', The Australian Ceramic Association, MAG&M, Sydney, NSW
'Gesture', Blue Mountains Grammar School Gallery, NSW
- 2013 'Artisans in the Gardens', Botanical Gardens, Sydney, NSW
- 2011 'Artisans in the Gardens', Botanical Gardens, Sydney, NSW
'In Situ', Mosman Festival of Sculpture & Installation, Sydney, NSW
- 2010 'Sculpture in the Vineyards', Wollombi, NSW
Salon Rouge Gallery, Kapunda, SA
- 2007 'Naughty', Sheffer Gallery, Sydney, NSW
- 2006 'Shelf Life', the Delmar Gallery, Sydney, NSW
'Nest', Slot Gallery, Sydney, NSW
- 2003 'Art on the Rocks', Sydney Harbour Foreshore Authority, Sydney, NSW
'Blush', Contemporary ceramics by studio artists, Fusions Gallery, Brisbane, QLD
Sydney Art on Paper Fair, Fox Studios, Sydney, NSW
- 2002 Melbourne Art Fair, Royal Exhibition Building, Melbourne, VIC
- 2001 '2001 A Space Odyssey', Penrith Regional Art Gallery, NSW
'Hungry Mans Exhibition', Manning Regional Art Gallery, Taree, NSW
'Hungry Mans Exhibition', Grafton, Orange, Hastings & Gloucester Regional Art Galleries, NSW
'A Studio in Paris: Australian Artists at the Cité', S.H. Ervin Gallery, Sydney, NSW
- 2000 'Paris', National Trust Cafe, S.H.Ervin Gallery, Sydney, NSW
Art Fair 2000, Royal Exhibition Building, Melbourne, VIC
- 1998 Australian Contemporary Art Fair, Royal Exhibition Building, Melbourne, VIC
- 1989 'Inside the Greenhouse', Tin Sheds Gallery, Sydney, NSW
- 1988 'Four/4,' Canberra Contemporary Arts Space, Canberra, ACT

KATE DORROUGH

SELECTED COLLECTIONS

Manning Regional Art Gallery, NSW

Campbelltown Art Gallery, NSW

Grafton Regional Gallery, NSW

Bathurst Regional Gallery, NSW

Melbourne Casino, VIC

Sony Music Entertainment Australia, NSW

Art Gallery of Ballarat, VIC

SELECTED BIBLIOGRAPHY

The Journal of Australian Ceramics, 'The Painterly Approach', Vol 62 No 2, 2023

Julie Ewington, 'Heather + Kate Dorrough : Lineage' Catalogue Essay, Manly Art Gallery & Museum, 2023

Dianne Peach, The Journal of Australian Ceramics, 'In the Spotlight', Vol 61 No 31, 2022

Victoria Hynes, 'Caverns of Mystery & Wonder', Catalogue Essay, Mosman Art Gallery, 2021

Vault Magazine, 'The Theatre of the Grotto', April 2021

Laraine Deer, Art Almanac, 'Behind Closed Doors', p 60 – 63, May 2020

NBN News, 'The Lyrical River', TV segment, Mid North Coast News, 2019

Victoria Hynes, 'Kate Dorrough at the Manning Regional Art Gallery', Asian Art News, Vol 29, 2019

Artist Profile Magazine, 'Kate Dorrough', Issue 41, 2019

Anne Brennan, The Journal of Australian Ceramics, 'Worlds within Worlds, Stepping Up Exhibition', Vol 54, Nov 2015

Jan Guy, The Journal of Australian Ceramics, 'The Course of objects: the fine lines of inquiry', Vol 53, Nov 2104

The Journal of Australian Ceramics, 'Gallery Section', Apr 2013

Diane Mah, 'The Enduring Landscape and the Inland River, Exhibition Reviews', Art Almanac, Nov 2012

Alexandra Djurichkovic, 'Artist interview: Kate Dorrough', Australian Art Collector, 6 Nov 2012

Vogue Living, 'Art & Events', July 2011

Belle Magazine, 'The Look, City Extra, Bringing a bit of Melbourne back home', 2011

Andrew Taylor, 'Raising an, er, smile', Culture, The Sun Herald, Oct 10 2010

Leah Haynes, 'Porcelain Porn,' Art notes, Art Monthly Australia, Iss 233, Sept 2010

Country Style Magazine, 'A month in the country', Jan 2010

Inside Out Magazine, 'At home', Nov 2008

Australian Art Review, 'The Cup', Buzz, Feb 2006

66 McLachlan Avenue
Rushcutters Bay NSW 2011
+61 2 9332 1019
contact@arthousegallery.com.au
www.arthousegallery.com.au

ARTHOUSE GALLERY

