

COLIN PENNOCK

*Voice of Paradise*





# COLIN PENNOCK

## *Voice of Paradise*

31 May – 21 June 2025

Artist Talk, Saturday 31 May 2:30 pm

Opening Celebration & Drinks, Thursday 5 June, 5 – 7 pm

When I was a kid – and even occasionally since then – I would sometimes have this experience where it felt like my body was massive. This would usually happen just before I fell asleep – in bed; eyes closed; awareness focused almost exclusively inwards. It's a difficult sensation to describe – almost like I was swelling, until my sense of my scale in the universe shifted and I occupied far more space than I knew my body typically did.

From time to time I've tried to find out if this is a common experience – but really just by way of a superficial online search—giving up as soon as it was suggested that my mind was judging my relentlessly thin frame through a body dysmorphic lens. Unlikely. My curiosity never persisted beyond this Dr Google diagnosis. That is, until I sat down to write this short reflection on Colin Pennock's work.

So, apparently there's this thing called proprioception. It's your sense of your body's position and movement in space and it can be disrupted by a range of things – including hypnagogic states (the transition from wakefulness to sleep).

What's that got to do with Colin's work? Well, I got to thinking about scale and the bodily relationship to works of different sizes on my most recent studio visit with Colin. It's almost impossible not to, given the contrast between works that zero in on intimate depictions of details within the natural environment, and the epic expanse of his wall-sized amalgam of reflections and impressions and place.

Colin's intimate works encourage you to look closely – amplifying the sense that you're looking in on something from the outside. The experience focusses your attention – asking you to look carefully and delicately (if that's a thing). His larger works, by contrast, tend to envelope you – wrapping around you and drawing you into their space. Works at this end of the spectrum disrupt our tenuous place at the centre of things. These ways of seeing are not exclusive to extremities of scale, but they're more easily recognised in those cases, and I like to think offer a gateway for training your eye in different and deliberate ways on dimensions in between.

But even more than that – irrespective of measurement – there’s something kind of dissociative or discordant in Colin’s paintings that resonates with that hypnagogic in-between space. I’ve avoided the word ‘landscape’ up until this point, even though that’s probably what these paintings are. But they’re not depictions of particular places – and often they fight against the logic of place and space altogether. A couple of vertical lines here and a horizontal there and suddenly a landscape punches out through a swarm of tantalising painterly marks. It’s this point on the cusp of becoming something tangible that makes Colin’s works so engrossing – not abstract or real (not asleep or awake), but just gestures in between – sensations pushing against one another, on the edge of becoming something familiar or known – or dissolving and disappearing, depending how you think about it.

I guess that also describes the edge of sleep – perhaps the edge of lots of things. Maybe even life itself.

Michael Brennan  
Gallery Director, Noosa Regional Gallery

Pennock has exhibited nationally and internationally and his work is held in prominent collections including the University of Ulster, the British Consulate in New York and Washington, the Brian Sewell Collection in London and the Hawkesbury Regional Gallery Collection. Pennock received a residency at NG Creative Art Residency in France (2022) and has been the winner of the Alan Gamble Award, Mosman Art Prize (2005) and a finalist in the Len Fox Painting Award (2016), Mosman Art Prize (2019, 2014) and Fleurieu Peninsula Art Prize (2008, 2004).





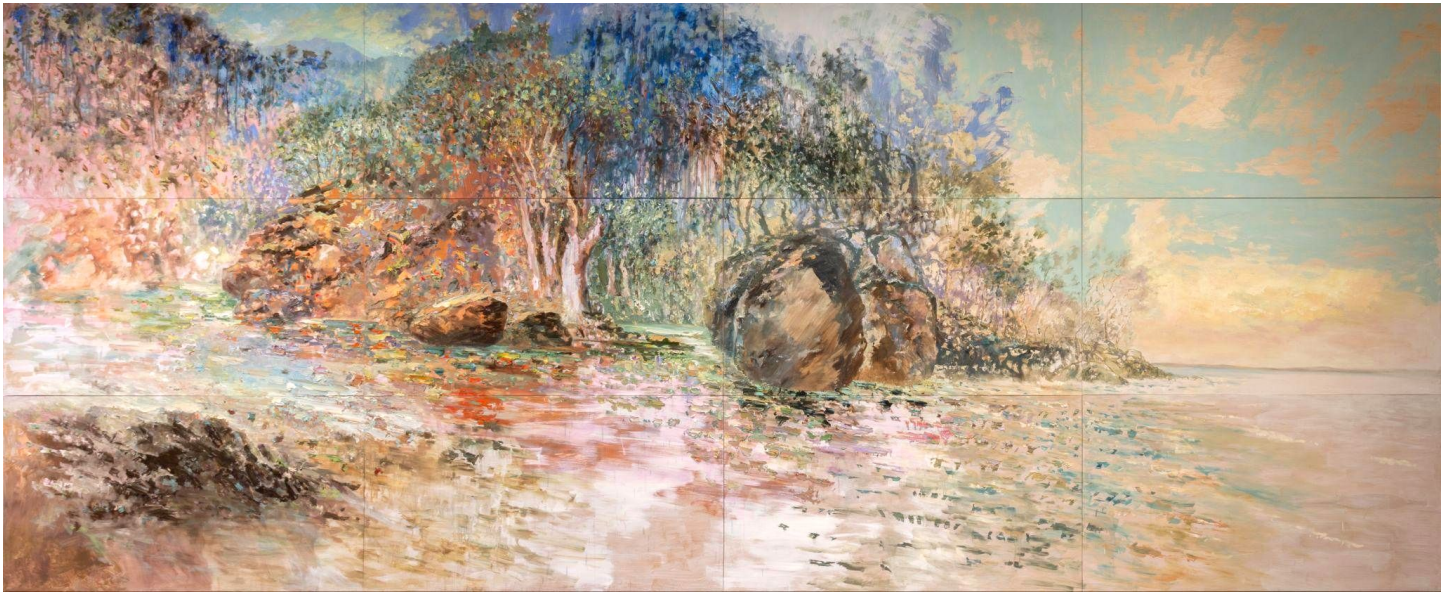


*Journey to Paradise*

oil on board

330 x 800 cm (12 panels)

\$270,000





# COLIN PENNOCK

## The creation of *Journey to Paradise*

Click the link below the view the video



Video by Simon Hewson

*Leprechauns and Serpents*

oil on board

202 x 246 cm (framed)

\$40,000





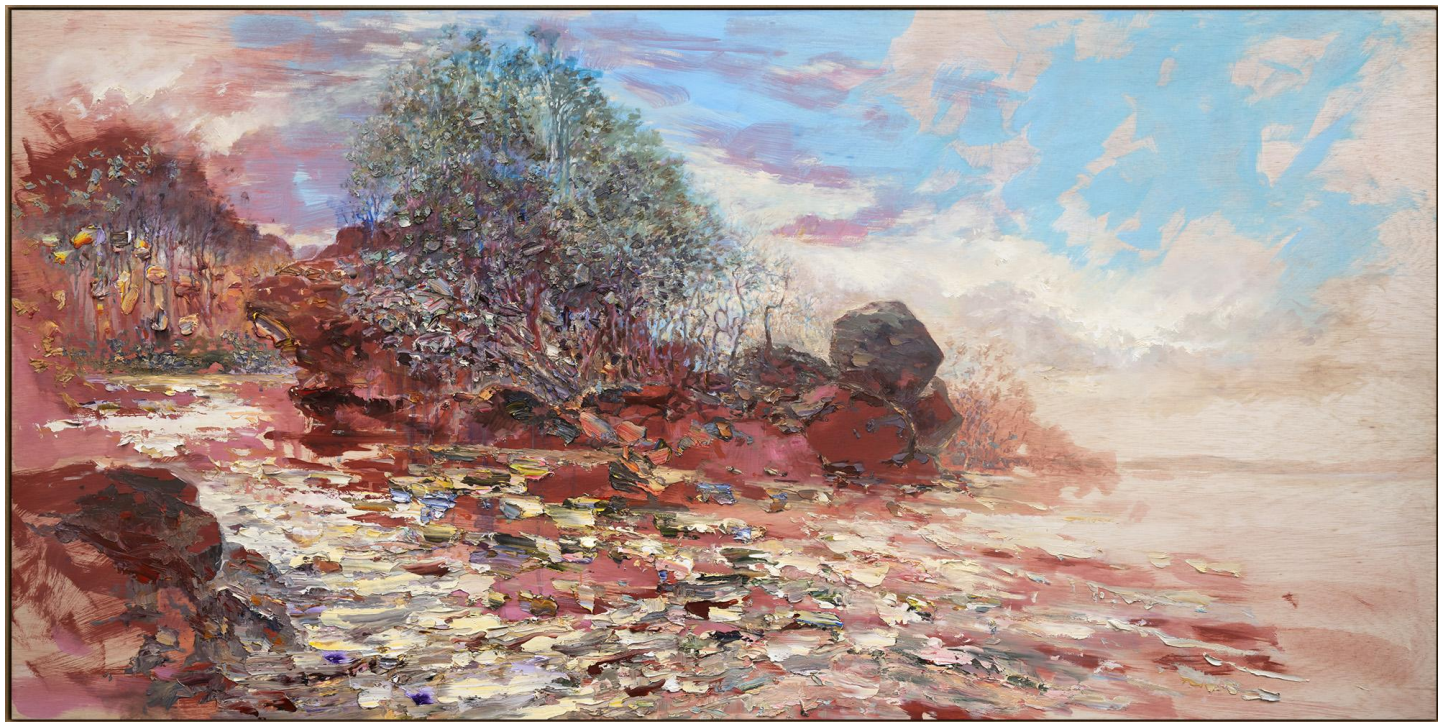


*Voice of Paradise*

oil on board

124 x 246 cm (framed)

\$30,000







*Journey From Paradise*

oil on board

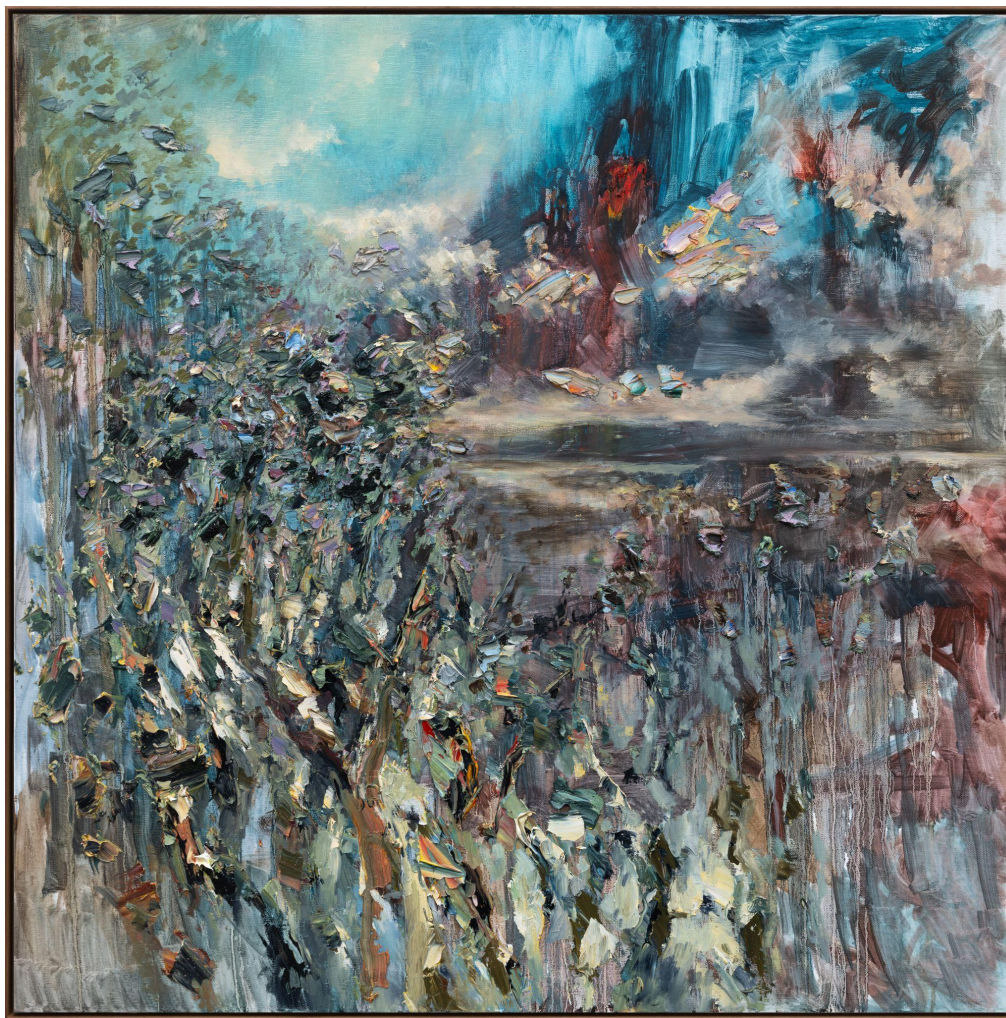
124 x 124 cm (framed)

\$17,600





*Van Diemen's Land*  
oil on linen  
92 x 92 cm (framed)  
\$11,000





**DETAIL** *Journey to Paradise*

oil on board

330 x 800 cm (12 panels)

\$270,000





*Truth Telling*

oil on board

124 x 124 cm (framed)

\$17,600



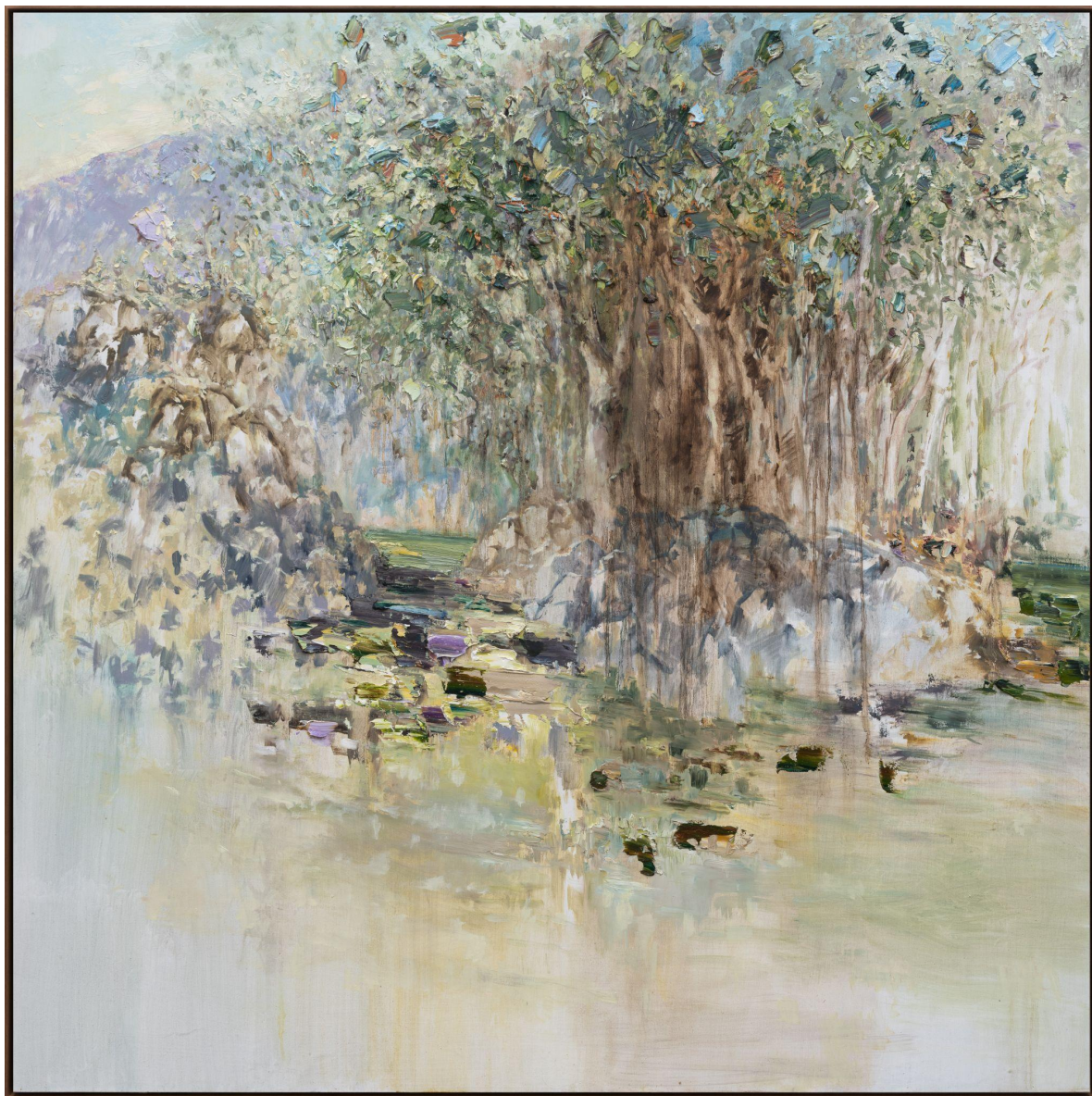


*Shedding and Growing*

oil on board

124 x 124 cm (framed)

\$17,600





**DETAIL** *Journey to Paradise*

oil on board

330 x 800 cm (12 panels)

\$270,000





*Waterways and Firmament*

oil on board

124 x 124 cm (framed)

\$17,600





*Colonial Lantern*

oil on linen

92 x 92 cm (framed)

\$11,000



*Near Ochre House*

oil and gouache on board

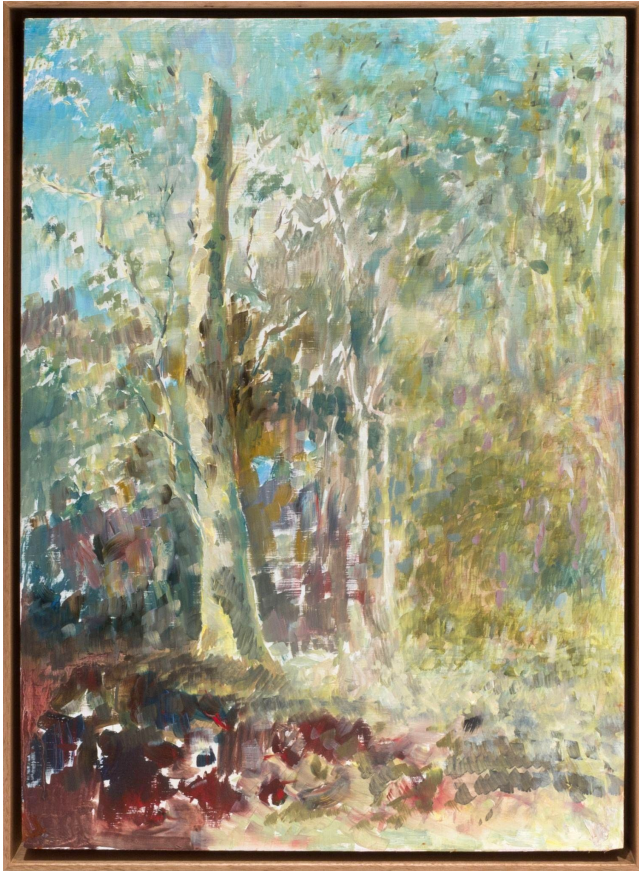
49 x 36 cm (framed)

\$3,900





*Along the Tangara Trail*  
oil and gouache on board  
49 x 36 cm (framed)  
\$3,900



*To the Scar Tree*  
oil and gouache on board  
49 x 36 cm (framed)  
\$3,900





*Losing Paradise*

oil on linen

124 x 124 cm (framed)

\$17,600









*Bootman's Jetty*

oil on linen

122.5 x 162.5 cm (framed)

\$19,800





*Leaving Broken Hill*  
oil on board  
125 x 125 cm (framed)  
\$17,600





*Coastal Dance*

oil on linen

143 x 201.5 cm (framed)

\$28,000





*As They Watched From Mutawindji*

oil on board

125 x 125 cm (framed)

\$17,600





*A Place I've Known and Hoped For*

oil on linen

92 x 92 cm (framed)

\$11,000





*A Space to Age and Find Peace*

oil on linen

200 x 260 cm (framed)

\$45,000





*Leaving Carnarvon Gorge*

oil on linen

64 x 64 cm (framed)

\$7,700





*As We Leave the Past*

oil on linen

143 x 201.5 cm (framed)

\$28,000





*Travelling Alone*

oil on linen

63 x 63 cm (framed)

\$7,700





# COLIN PENNOCK

*Born 1964, Ireland*

## EDUCATION

1989 BA Hons Degree Fine Art (Painting), St Martins School of Art, London, UK  
1986 Foundation Art Course, St Martins School of Art London, UK

## AWARDS, GRANTS & RESIDENCIES

2025 All That We Are, Hobart, Tasmania  
2022 NG Art Creative Residency, France  
2019 Mosman Art Prize, Sydney, NSW, Finalist  
2016 Len Fox Painting Award, VIC, Finalist  
2014 Mosman Art Prize, Sydney, NSW, Finalist  
2008 Fleurieu Peninsula Water Prize, SA, Finalist  
2005 Alan Gamble Award, Mosman Art Prize, Mosman, NSW, Winner  
2004 Fleurieu Peninsula Art Prize, SA, Finalist

## SELECTED SOLO EXHIBITIONS

2025 'Journey to Paradise', Noosa Regional Gallery, QLD  
2024 'Passing Through', BMG Art, Adelaide, SA  
'Pathway To Equilibrium', Otomys, Melbourne, VIC  
2023 'Space to Find Peace', Arthouse Gallery, Sydney NSW  
2022 'To Follow Gentle Voices', Arthouse Gallery, Sydney, NSW  
'Familiar Voices', Serena Morton Gallery, London, UK  
2020 'Reign & Fall', BMG, Adelaide, SA  
'The Modernist', Scott Livesey Galleries, Melbourne, VIC  
2019 'A Forgotten Traveller', Arthouse Gallery at Sydney Contemporary, Sydney, NSW  
'Things I Tried to Say', BMG Art, Adelaide, SA  
2018 'Past Voices', Arthouse Gallery, Sydney, NSW  
'Self Portrait', Serena Morton Gallery, London, UK  
2017 'Intrusion', Arthouse Gallery, Sydney, NSW  
'Silenced', Scott Livesey Galleries, Melbourne, VIC  
2016 'Modern Recluse', Arthouse Gallery, Sydney, NSW  
'Promise to Remember', BMG Art, Adelaide, SA  
2015 'Expat', Scott Livesey Galleries, Melbourne, VIC  
2014 'Pioneer', Arthouse Gallery, Sydney, NSW  
'Wayfarer', BMG Art, Adelaide, SA  
2013 'The Last Place to Look', Arthouse Gallery, Sydney, NSW  
'Tracker', Scott Livesey Galleries, Melbourne, VIC

# COLIN PENNOCK

|      |  |
|------|--|
| 2011 | 'Rural Convict', Scott Livesey Galleries, Melbourne, VIC                     |
| 2007 | 'Strata', Scott Livesey Galleries Melbourne, VIC                             |
|      | 'Light and Sound in the Hawkesbury', Michael Reid, Sydney, NSW               |
| 2006 | 'Fragment of the Greater Landscape', Scott Livesey Galleries, Melbourne, VIC |
| 2005 | 'Tin Town' Art Equity, Barrack Gallery, Sydney, NSW                          |
|      | 'Solo' A1 + 2 Gallery, Balmain, Sydney, NSW                                  |

## SELECTED GROUP EXHIBITIONS

|      |  |
|------|--|
| 2024 | '30 Years of Arthouse Gallery', Arthouse Gallery, Sydney, NSW            |
|      | 'Bloom', Arthouse Gallery, Sydney, NSW                                   |
|      | 'about-place/about-face', Caloundra Regional Gallery, Caloundra, QLD     |
| 2023 | 'Paper', BMG, Adelaide   |
|      | 'Traverses with Kevin Wilson', Butter Factory, QLD                       |
|      | 'Paper and Clay', Arthouse Gallery, Sydney, NSW                          |
|      | 'Summer', Arthouse Gallery, Sydney, NSW                                  |
| 2022 | Arthouse Gallery Group Show at Sydney Contemporary Art Fair, Sydney, NSW |
|      | 'Out of the Blue', Arthouse Gallery, Sydney, NSW                         |
|      | 'Flood Relief – Spread the Love', Arthouse Gallery, Sydney, NSW          |
|      | 'December Exhibition', BMG, Adelaide                                     |
|      | 'Vernissage', NG Art Creative Exhibition, Provence, France               |
| 2021 | 'Coming Home', Arthouse Gallery, Sydney, NSW                             |
|      | 'Summer Salon', Arthouse Gallery, Sydney, NSW                            |
|      | 'Summer', Scott Livesey Galleries, Melbourne, VIC                        |
|      | 'Group Show', Serena Morton, London                                      |
|      | 'TWENTY ONE', Scott Livesey Galleries, Melbourne, VIC                    |
|      | 'Autumn Selection' Scott Livesey Galleries, Melbourne, VIC               |
| 2020 | 'Renewal', Arthouse Gallery, Sydney, NSW                                 |
|      | 'Summer', Arthouse Gallery, Sydney, NSW                                  |
|      | 'Artist Spotlight The Gallery Collection' Serena Morton, London          |
| 2019 | 'Reflections of a Fading Sky', Arthouse Gallery, Sydney, NSW             |
| 2018 | 'Summer Salon', Arthouse Gallery, Sydney, NSW                            |
|      | 'Christmas Exhibition', Scott Livesey Galleries, Melbourne, VIC          |
|      | 'The Way You Came' Arthouse Gallery, Sydney, NSW                         |
|      | Serena Morton Gallery at London Art Fair, London, UK                     |
| 2017 | Arthouse Gallery at Sydney Contemporary, Sydney, NSW                     |
|      | 'Start of the Season', Serena Morton Gallery, London, UK                 |
|      | 'Summer 17', Arthouse, Sydney, NSW                                       |



# COLIN PENNOCK

|      |   |
|------|---|
| 2016 | 'Summer Salon', Scott Livesey Galleries, Melbourne, VIC<br>'Under the Sun', Arthouse, Sydney, NSW<br>'Christmas Show', BMG Art, Adelaide, SA<br>'602', Scott Livesey Galleries, Melbourne, VIC<br>'From the Stockroom', Scott Livesey Galleries, Melbourne, VIC   |
| 2015 | 'Summer Salon', Scott Livesey Galleries, Melbourne, VIC<br>Scott Livesey Galleries at Sydney Contemporary, Sydney, NSW<br>'Under the Sun', Arthouse Gallery, Sydney, NSW<br>'Christmas Show', BMG Art, Adelaide, SA<br>'The Salon', Scott Livesey Galleries, Melbourne, VIC<br>'Unfolding Splendour', Arthouse Gallery, Sydney, NSW |
| 2014 | 'Under the Sun', Arthouse Gallery, Sydney, NSW<br>'Grand Opening', Serena Morton Gallery, London, UK<br>'Christmas Show', BMG Art, Adelaide, SA<br>'Twenty Fourteen', Scott Livesey Galleries, Melbourne, VIC<br>'Prime', Arthouse Gallery, Sydney, NSW   |
| 2013 | 'Imaginings', Arthouse Gallery, Sydney, NSW<br>'In the Scheme of Things', Arthouse Gallery, Sydney, NSW<br>'Winter Selection', Scott Livesey Galleries, Melbourne, VIC  |
| 2012 | Gallery 1 – Scott Livesey Galleries, Melbourne, VIC<br>Scott Livesey Galleries at Melbourne Art Fair, Melbourne, VIC<br>'Under the Sun', Arthouse Gallery, Sydney, NSW<br>Gallery 2 – Scott Livesey Galleries, Melbourne, VIC<br>The Stockroom – Scott Livesey Galleries, Melbourne, VIC  |
| 2011 | 'Stockroom Show', Scott Livesey Galleries, Melbourne, VIC   |
| 2009 | 'Christmas Show 2009', Belgravia Gallery, London, UK<br>'Paintings and Objects', curated by David Bromley, Hill Smith Gallery, Adelaide, SA   |
| 2008 | 'Group Show 08', Scott Livesey Galleries, Melbourne, VIC<br>'Sum of Us', Michael Reid, Sydney, NSW  |
| 2007 | 'Squared', Greenhill Galleries, Perth, WA   |
| 2005 | 'Group Show', Delmar Gallery, Sydney, NSW   |
| 2004 | 'Group Show', Rushcutters Bay Gallery, Sydney, NSW<br>Sydney Affordable Art Fair, Sydney, NSW   |
| 1998 | 'Culture and Conflict', Puffin Gallery, Soho, New York, USA   |
| 1989 | 'Group Show', Pages Yard House Gallery, London, UK<br>'Group Show', Hatton Gardens Gallery, London, UK<br>'Chelsea Piers Group Show', London, UK  |

# COLIN PENNOCK

## SELECTED EVENTS

2013  
Belle Magazine Artist Dinner, Adelaide, SA  
'Dinner with the Artist', Michael Reid, Sydney, NSW  
'Art for Science', Murdoch Children's Research Institute, Sydney, NSW

## SELECTED COLLECTIONS

University of Ulster, Belfast, Northern Ireland  
British Consulate New York and Washington, USA  
Hawkesbury Regional Gallery Collection, Windsor, NSW  
RACV Club, Melbourne, VIC

## SELECTED BIBLIOGRAPHY

Artist Profile Magazine, pg. 128 - 130, Iss. 71, 2025  
Michael Brennan, 'Space To Find Peace, Catalogue Essay, 2023  
Elli Walsh, 'To Follow Gentle Voices', Catalogue Essay, 2022  
Maria Stoljar, Talking with Painters Podcast – Episode 91, May 2020  
Courtney Kidd, Art Collector, Sydney Contemporary 2019 Special Edition, p.70-71, 2019  
Elli Walsh, 'Forgotten Traveller', Catalogue Essay, 2019  
Kevin Wilson, Artist Profile Magazine, p.114-118, Iss.45, 2018  
John McDonald, 'Past Voices', Catalogue Essay, 2018  
'Colin Pennock – Modern Recluse', Alt Media, 2016  
'Colin Pennock presents Expat', Broadsheet Melbourne (online), 2015  
Elli Walsh, 'Pioneer', Catalogue Essay, 2014  
John Neylon, 'Slice and Dice', Adelaide Review, 2014  
'Depth of Field', Belle Magazine, Oct/Nov p.183-6, 2013  
'Colin Pennock – Tracker', Share Design Inspiration Blog, Jun 2013  
Ashley Crawford, 'Tracker', Catalogue Essay, 2013  
'Colin Pennock – Tracker', Melbourne Review, 2013  
'Colin Pennock', Mildred Magazine (online), 2013  
Artist Profile Magazine, p.145, Iss.23, 2013



An older man with white hair and glasses, wearing a dark blue t-shirt and overalls, is painting a large, detailed landscape on a wall. He is holding a paintbrush in his right hand and a palette in his left. The painting depicts a forest scene with tall trees and a path. To the right, there is a smaller easel with another painting. The floor is concrete, and there is a bucket nearby.

## ARTHOUSE GALLERY

66 McLachlan Avenue  
Rushcutters Bay NSW 2011  
+61 2 9332 1019  
[contact@arthousegallery.com.au](mailto:contact@arthousegallery.com.au)  
[www.arthousegallery.com.au](http://www.arthousegallery.com.au)